

# Product Datasheet

## Pit1 Antibody NBP1-92273

Unit Size: 0.1 ml

Store at 4C short term. Aliquot and store at -20C long term. Avoid freeze-thaw cycles.

[www.novusbio.com](http://www.novusbio.com)



[technical@novusbio.com](mailto:technical@novusbio.com)

**Publications: 13**

Protocols, Publications, Related Products, Reviews, Research Tools and Images at:  
[www.novusbio.com/NBP1-92273](http://www.novusbio.com/NBP1-92273)

Updated 9/14/2021 v.20.1

**Earn rewards for product  
reviews and publications.**

Submit a publication at [www.novusbio.com/publications](http://www.novusbio.com/publications)

Submit a review at [www.novusbio.com/reviews/destination/NBP1-92273](http://www.novusbio.com/reviews/destination/NBP1-92273)



**NBP1-92273**

Pit1 Antibody

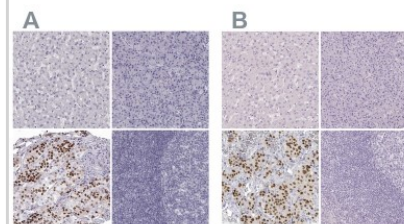
Product Information	
<b>Unit Size</b>	0.1 ml
<b>Concentration</b>	Concentrations vary lot to lot. See vial label for concentration. If unlisted please contact technical services.
<b>Storage</b>	Store at 4C short term. Aliquot and store at -20C long term. Avoid freeze-thaw cycles.
<b>Clonality</b>	Polyclonal
<b>Preservative</b>	0.02% Sodium Azide
<b>Isotype</b>	IgG
<b>Purity</b>	Immunogen affinity purified
<b>Buffer</b>	PBS (pH 7.2) and 40% Glycerol

Product Description	
<b>Host</b>	Rabbit
<b>Gene ID</b>	5449
<b>Gene Symbol</b>	POU1F1
<b>Species</b>	Human, Mouse
<b>Reactivity Notes</b>	Mouse reactivity reported in scientific literature (PMID:32958754)
<b>Immunogen</b>	This antibody was developed against Recombinant Protein corresponding to amino acids: CKLKAILSKWLEEAQVVGALYNEKVGANERKRKRRTTISIAAKDALERHFGEQN KPSSQEIMRMAE

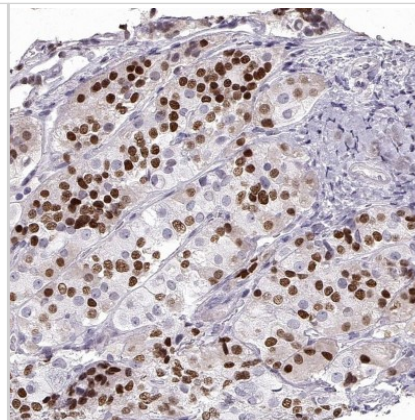
Product Application Details	
<b>Applications</b>	Immunohistochemistry, Immunohistochemistry-Paraffin
<b>Recommended Dilutions</b>	Immunohistochemistry 1:1000 - 1:2500, Immunohistochemistry-Paraffin 1:1000 - 1:2500
<b>Application Notes</b>	IHC-P, Retrieval method: HIER pH6

**Images**

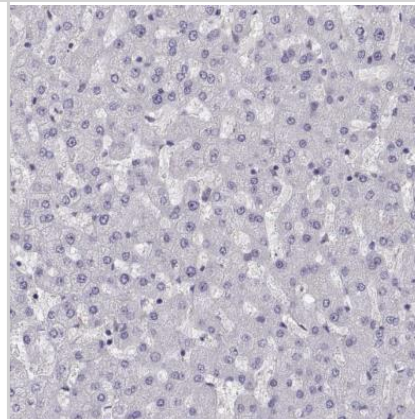
Immunohistochemistry-Paraffin: Pit1 Antibody [NBP1-92273] - Staining of human liver, pancreas, pituitary gland and tonsil using Anti-POU1F1 antibody NBP1-92273 (A) shows similar protein distribution across tissues to independent antibody NBP2-55357 (B).



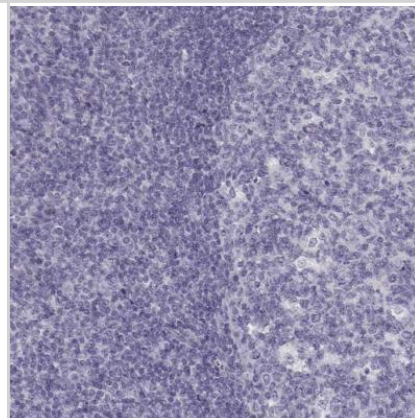
Immunohistochemistry-Paraffin: Pit1 Antibody [NBP1-92273] - Staining of human pituitary gland shows moderate to strong nuclear positivity in neuroendocrine cells in the anterior lobe.



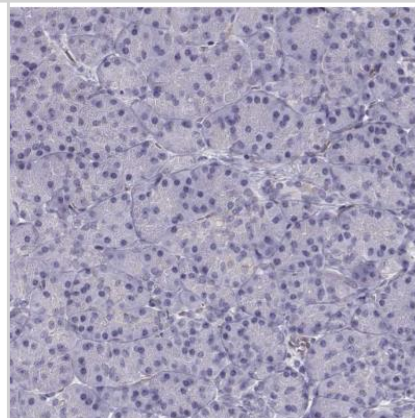
Immunohistochemistry-Paraffin: Pit1 Antibody [NBP1-92273] - Staining of human liver shows no positivity in hepatocytes as expected.



Immunohistochemistry-Paraffin: Pit1 Antibody [NBP1-92273] - Staining of human tonsil shows no positivity in non-germinal center cells as expected.



Immunohistochemistry-Paraffin: Pit1 Antibody [NBP1-92273] - Staining of human pancreas shows no positivity in exocrine glandular cells as expected.



## Publications

Tjornstrand A, Casar-Borota O, Heurling K, et al. Pre- and postoperative 68 Ga-DOTATOC positron emission tomography for hormone-secreting pituitary neuroendocrine tumors Clinical endocrinology Jan 23 2021 12:00AM [PMID: 33484167] (IHC-P, Human)

Taniguchi-Ponciano K, Pena-Martinez E, Silva-Roman G et al. Proteomic and Transcriptomic Analysis Identify Spliceosome as a Significant Component of the Molecular Machinery in the Pituitary Tumors Derived from POU1F1- and NR5A1-Cell Lineages Genes Nov 27 2020 12:00AM [PMID: 33261069] (IHC-P, Human)

Details:  
Immunohistochemical analysis of normal/tumor human pituitary tissue.

Taniguchi-Ponciano K, Andonegui-Elguera S, PeNa-Martinez E et al. Transcriptome and methylome analysis reveals three cellular origins of pituitary tumors Sci Rep Nov 9 2020 12:00AM [PMID: 33168897] (IHC-P, Human)

Details:  
Immunohistochemical analysis of paraffin-embedded human pituitary adenomas.

Abboud D, Daly AF, Dupuis N et al. GPR101 drives growth hormone hypersecretion and gigantism in mice via constitutive activation of Gs and Gq/11 Nat Commun Sep 21 2020 12:00AM [PMID: 32958754] (IHC-P, Mouse)

Neou M, Villa C, Armignacco R, et al. Pangenomic Classification of Pituitary Neuroendocrine Tumors Cancer Cell Dec 11 2019 12:00AM [PMID: 31883967]

Tjornstrand A, Casar-Borota O, Heurling K, et al. Lower 68 Ga-DOTATOC Uptake in Non-Functioning Pituitary Neuroendocrine Tumors Compared to Normal Pituitary Gland - a Proof-of-Concept Study Clin. Endocrinol. (Oxf) Dec 23 2019 12:00AM [PMID: 31868239]

Capraru O, Gaillard C, Vasiljevic A et al. Diagnosis, pathology, and management of TSH-secreting pituitary tumors. A single-center retrospective study of 20 patients from 1981 to 2014 Annales d'Endocrinologie Jul 1 2019 12:00AM [PMID: 31400861] (IHC, Human)

You J, Li M, Cao LM et al. Comprehensive analysis of circulating microRNAs in plasma of patients with pituitary adenomas J. Clin. Endocrinol. Metab. May 21 2019 12:00AM [PMID: 31112271] (IHC, Human)

Maher M, Roncaroli F, Mendoza N et al. A patient with a germline SDHB mutation presenting with an isolated pituitary macroprolactinoma Endocrinol Diabetes Metab Case Rep Jul 21 2018 12:00AM [PMID: 30087776] (IHC, Human)

Scaroni C, Albiger N, Daniele A et al. Paradoxical GH increase during OGTT is associated to first-generation somatostatin analogs responsiveness in acromegaly. J. Clin. Endocrinol. Metab. Oct 3 2018 12:00AM [PMID: 30285115] (IHC, Human)

Albuquerque RFC, Carbonara CEM, Martin RCT et al. Parathyroidectomy in patients with chronic kidney disease: Impacts of different techniques on the biochemical and clinical evolution of secondary hyperparathyroidism Surgery. 2017 Nov 13 [PMID: 29146232] (Human)

oystese KA, Zucknick M, Casar-Borota O et al. Early postoperative growth in non-functioning pituitary adenomas; A tool to tailor safe follow-up. Endocrine May 17 2017 12:00AM [PMID: 28516382] (Human)

More publications at <http://www.novusbio.com/NBP1-92273>



### **Novus Biologicals USA**

10730 E. Briarwood Avenue  
Centennial, CO 80112  
USA  
Phone: 303.730.1950  
Toll Free: 1.888.506.6887  
Fax: 303.730.1966  
novus@novusbio.com

### **Bio-Techne Canada**

21 Canmotor Ave  
Toronto, ON M8Z 4E6  
Canada  
Phone: 905.827.6400  
Toll Free: 855.668.8722  
Fax: 905.827.6402  
canada.inquires@bio-techne.com

### **Bio-Techne Ltd**

19 Barton Lane  
Abingdon Science Park  
Abingdon, OX14 3NB, United Kingdom  
Phone: (44) (0) 1235 529449  
Free Phone: 0800 37 34 15  
Fax: (44) (0) 1235 533420  
info.EMEA@bio-techne.com

### **General Contact Information**

www.novusbio.com  
Technical Support: technical@novusbio.com  
Orders: orders@novusbio.com  
General: novus@novusbio.com

### **Products Related to NBP1-92273**

---

NBP1-92273PEP	Pit1 Recombinant Protein Antigen
HAF008	Goat anti-Rabbit IgG Secondary Antibody [HRP (Horseradish Peroxidase)]
NB7156	Goat anti-Rabbit IgG (H+L) Secondary Antibody
NBP2-24891	Rabbit IgG Isotype Control

---

### **Limitations**

This product is for research use only and is not approved for use in humans or in clinical diagnosis. Primary Antibodies are guaranteed for 1 year from date of receipt.

For more information on our 100% guarantee, please visit [www.novusbio.com/guarantee](http://www.novusbio.com/guarantee)

Earn gift cards/discounts by submitting a review: [www.novusbio.com/reviews/submit/NBP1-92273](http://www.novusbio.com/reviews/submit/NBP1-92273)

Earn gift cards/discounts by submitting a publication using this product:  
[www.novusbio.com/publications](http://www.novusbio.com/publications)

